



# Barnsbury Primary School and Nursery

Almond Avenue  
Barnsbury  
Woking  
Surrey  
GU22 0BB

Telephone: 01483 763114  
Email: info@barnsbury.surrey.sch.uk

**Headteacher: Mrs J Harrup**

20th September 2024

Dear Parents and Carers

Our new Reception children continue to settle so well into school life. It is so lovely watching the children come so happily into school each morning. The school continues to be calm and purposeful with the children working hard and wanting to learn, settling so well into their new classrooms.

Last week, many children in Year 6 wrote to me requesting that they be considered for the roles of House Captain and/or Sports Captain. I have never had so many letters from a group of Year 6 children! I was so impressed with the thought and effort that went into the letters from the children. These children then went through to the second round of the interview process, presenting a speech to the rest of their House. It has been reported to me that the children spoke clearly and confidently and once again were really thoughtful about what they wanted to say to the other children. Every child who stood for the position of House or Sports Captain should be so proud of themselves, to have the courage to apply and also for the quality of their letter and speech.

I am delighted to announce the House and Sports Captains for the academic year 2024-25.

## House Captains

**Centaur:** Thomas C & Tabitha

**Gryphon:** William & Rita

**Phoenix:** Freddie M & Annukka

**Unicorn:** Noah & Sophie

## Sports Captains

**Centaur:** Jack & Izzy

**Gryphon:** Harri & Charlotte

**Phoenix:** Praise & Kaja

**Unicorn:** Aroosh & Amelia



Congratulations to you all—we are very proud of you.



Families and staff of Barnsbury have been invited to the **VIP Preview** of Surrey Nature Day after school on Friday 27 September at West Horsley Place, Epsom Road, Leatherhead, KT24 6AN

The main event is a performance about habitat restoration - an original script, produced and directed by Guildford Shakespeare Company. Alongside the show, there will be a variety of different stallholders showcasing their work in nature recovery. The event is supporting Surrey Nature Strategy's public engagement and event attendees are invited to complete the online survey: [www.surreynaturerecovery.commonplace.is](http://www.surreynaturerecovery.commonplace.is)

Miss Freeland is taking her Eco-Council during the day, however the VIP is the private viewing held after the schools have left. It is primarily a chance for the dignitaries of Surrey to attend the event, see the performance and talk to the stallholders.

However, there are spaces left for this special VIP event and the organisers would very much like to see those spaces filled by families. The performance will only be brought to life if children are in the audience and currently there are none! Therefore, there is an open the invitation up to Barnsbury families to come along after school, as invited VIPs – the family day on the Saturday is fully booked and so this is a chance for anyone who missed out on getting tickets to come along!

Spaces are **very limited** so it will be allocations on a first come, first served basis and anyone interested **must** email [engagementbookings@surreycc.gov.uk](mailto:engagementbookings@surreycc.gov.uk) with the amount of tickets they require – stating number of children and adults by Tuesday 24th September.

Timings are as follows:

- **Arrival any time after 3pm** – a chance to look at the stalls and find out more about Surrey Nature Recovery.
- **4pm – latest arrival time for young audience members coming from school**
- **4pm to 4:10pm** – pre-show preparation
- **4.10pm to 5pm** – Start your *Wild Walk* which lasts approximately 50minutes
- **5pm** – finish

Wishing you all a wonderful weekend (hope the thunder and lightning stops!).

With kind regards

Mrs J E Harrup  
Headteacher

# Dates for your diary 2024-25

## Autumn Term

### September

Monday 16th	9.00am Year 3 Parent Information Meeting
Tuesday 17th	2.30pm Reception Parent Information meeting
Thursday 19th	2.30pm Year 1 Parent Information Meeting

### October

Tuesday 1st	9.00am Prospective Parent Tour
Thursday 3rd	2.00pm Prospective Parent Tour
Friday 4th	9.00am 4D Class Assembly
Friday 4th	2.50—3.15pm—PTA Preloved Uniform Sale
Tuesday 8th	2.00pm Prospective Parent Tour
Thursday 10th	9.00am Prospective Parent Tour
Friday 11th	9.00am Year 3 Harvest Assembly
Friday 25th	9.00am 5M Class Assembly
Friday 25th	PTA—Non Uniform Day
Monday 28th to 1st	Half Term

### November

Friday 1st	Half Term
Monday 4th	INSET Day
Tuesday 5th	INSET Day
Wednesday 6th	Children return after half term
Friday 8th	6.30-8.30pm—PTA—Barnsbury Boutique Night
Tuesday 12th	PTA—Bags to School
Wednesday 13th	PTA—Bags to School
Thursday 14th	PTA—Bags to School
Monday 18th	9.00am Prospective Parent Tour
Wednesday 20th	2.00pm Prospective Parent Tour
Friday 29th	9.00am 6L Class Assembly
Friday 29th	10am—PTA—Hedegrow Planting

### December

Friday 6th	9.00am 3M Class Assembly
Friday 20th	1.15pm End of Term



**Star of the  
Week**

**Effort  
Award**

**Values  
Award**

<b>Oak</b>	Rafferty	Ethan	Amelie
<b>Ash</b>	Maya	Robert	Matthew
<b>1B</b>	Carter	Dominic	Jack
<b>1M</b>	Noah	Liv	Imogen
<b>2M</b>	Rebecca	John	Jack
<b>2T</b>	Hannah	Ekow	Lottie
<b>3B</b>	Avy	Gia-Rae	Maximus
<b>3M</b>	Poema	Niyam	Isla-Rose
<b>4D</b>	Holly	Jonathan	Kyra
<b>4J</b>	Sulaiman	Ollie	Elsie
<b>5M</b>	Arvin	Jack	Arvin
<b>5T</b>	Will B	Zoe	Mia
<b>6G</b>	Amelia	Praise	Olivia
<b>6L</b>	Catalina	Thomas A	Sophie

**Congratulations to the Eco this week:**



**Congratulations to the recipients of a  
WOW certificate this week: Bowen (6G),  
Noah (6G), Danny (6G), Praise (6G), Isa-  
belle (6G), Frankie (4D), Mila (4D),  
Khayaati (4D)**



## Phonics Fun

An autumnal phonics activity for you this week. Collect objects like acorns, conkers, pine cones and leaves when you're out on a walk.

Place them in a tray with some rice or chickpeas, I added some food dye to mine to make it a bit more exciting and add your desired sounds to support your child and they will love it. I found the wooden mushrooms in Primark.

Enjoy, Miss Paice



## Our French Connection!

The year 4 children were really interested to see the photos and videos that Mrs Kidd brought back from her visit to France last week. They saw the French children taking part in an English lesson - we thought they did really well! We noticed that the children in France do not wear a school uniform. We are looking forward to exchanging letters with the class in Henri Wallon School in our twin town of Plessis Robinson!



# What Parents & Educators Need to Know about FINAL FANTASY XIV



## WHAT ARE THE RISKS?

The video game Final Fantasy XIV launched in 2010, and, despite being critically panned, it saw an overhaul that has made it one of the biggest success stories in gaming. Its huge world, epic story and versatile combat system have continued to draw in new players, but there's a lot that trusted adults need to be aware of – not least the cost of paying monthly to play.

### ALWAYS ONLINE

Final Fantasy XIV is an MMORPG, which stands for Massively Multiplayer Online Role-Playing Game. Much like World of Warcraft, players create a character in a chosen class and level up by completing quests to gain power and items. The game requires a constant internet connection, whether you're playing on PC, Mac, PlayStation or Xbox, and there's no option to play offline.

### REGULAR EXPANSIONS

As with similar titles in the genre, players can purchase expansions to unlock additional content for the game. Those without the expansions will be locked out of certain new quests and activities, meaning that young people who play regularly will potentially have the next release earmarked on their calendar, ready to buy it as soon as possible.

### IN-GAME PURCHASES & SUBSCRIPTION FEE

Users need to pay £8.99 per month to play Final Fantasy XIV, but there is a free trial. If someone stops paying, they'll lose access to their character (although they'll be able to pick up the payments again and resume where they left off). If a player forgets to cancel their payments, however, those subscription fees will continue rolling on automatically.

### VOICE & TEXT CHAT

Final Fantasy XIV lets players send chat messages in-game or speak to each other over voice chat. On the one hand, that provides plenty of choice for how those enjoying the game can interact with their fellow fans. On the other hand, however, it's easier than in many games to receive unprompted messages from a stranger, with whom you constantly share your play space.

### VIOLENCE

While Final Fantasy XIV has a fairly light tone throughout some of its quests, many involve killing enemies and sometimes even wild animals. The violence isn't especially strong – more comparable to a cartoon or anime style – but the act alone may make some children feel uncomfortable, if they're not yet able to separate fictional harm from the real kind.

### POTENTIAL FOR ADDICTION

As with World of Warcraft, there's an element of addiction to Final Fantasy XIV. The gameplay loop can be quite engrossing, as minutes turn into hours and hours into days while playing alone or with friends. This can potentially lead to missing real-life events, a lack of interest in any activities not related to the game and procrastination around responsibilities like schoolwork.

FREE TRIAL

## Advice for Parents & Educators

### MANAGE PLAYTIME

Playtime limits are a great way to counter the addictive qualities of games like Final Fantasy XIV. They allow you discuss why it's still important to enjoy things outside of gaming while still letting a child enjoy playing online with their friends when it makes sense to do so. It's all well and good to have fun with a game, so long as they're able to step away and reconnect with the real world.

### MAKE USE OF THE FREE TRIAL

The Final Fantasy XIV free trial is a generous one, with no limits on how long someone can play until their character hits level 70. That's easily dozens of hours for a child to go through the game, complete quests, and see if they enjoy it before purchasing expansions or subscribing to a membership. They may well move on to something else before you need to spend so much as a penny.

### PLAY TOGETHER

The free trial makes it extremely easy to jump into Final Fantasy XIV and play alongside a child, provided they're old enough. Not only does that help you ensure that settings are adjusted for their privacy and safety, but it may also end up becoming a bonding experience for you both and any other family members that want to try it out.

### REMEMBER, IT'S A PEGI 16

Despite its often-relaxing nature, Final Fantasy XIV carries a PEGI 16 rating for violence and drugs (although the latter is due to a character smoking a pipe on occasion). There's minimal blood, but characters can attack enemies (and other players) with weapons and spells. Take a look at some gameplay videos to see if the content is appropriate for a younger player.

### Meet Our Expert

Lloyd Coombes is the Editor-in-Chief of GGRecon, and has been working in the gaming and tech industry for five years. A longtime fan of online games, he's also a parent, and therefore understands the importance of online safety. Writing mainly about tech and fitness, his work has previously been published at sites including IGN, TechRadar and plenty more.



The National College

Source: See full reference list on guide page at: <https://nationalcollege.com/guides/final-fantasy-14>



# PRE-LOVED



# UNIFORM SALE

## PRICE LIST

Red Logo Sweatshirt / Cardigan	£2.00
PE Shorts / T-Shirts	£1.50
Grey PE Kit	£2.00
Summer Dress	£1.00
Grey skirts / dresses / T-Shirts	50p
Accessories from	£1.00

**FRIDAY 4th October**

**KS1 HALL 2.50 - 3.15PM**

All donations gratefully received at the school office.  
Cash, card or bank transfer to the PTA (correct change if you can!)

 **Save the planet, save the pennies, buy pre-loved** 

# **BARNSBURY BOUTIQUE NIGHT**

**FRIDAY 8TH NOVEMBER  
6.30-9.30PM**

**GET YOUR CHRISTMAS  
SHOPPING IN EARLY!**







# **BAG 2 SCHOOL**



**Our next Bag2School  
collections are on:**

**Tuesday 12th November**

**Wednesday 13th November**

**Thursday 14th November**

**Drop off at KS1 gate and office car park**

# Volunteer Mornings

## Hedgerow Planting

Surrey CC are working with Barnsbury this year to plant hedgerows on the school field.

The hedgerows will be planted to mark out the end of the sports area and the 'wild' area on our sports field.

It's a fantastic learning opportunity for the children watching them grow and creating a habitat for birds, small mammals and insects, increasing bio diversity.

We are looking for around 9 volunteers to help.

FRIDAY 29TH NOVEMBER

**TIME:** 10am. We aim to plant the hedegrow in 3 hours.

Please let the school office or your PTA Rep know if you can help.



# AUTUMN CHILL

## SEPTEMBER 29TH 2024

*YOU ARE WARMLY INVITED TO THE AUTUMN CHILL*

*AT ST MARY OF BETHANY*

*29TH SEPTEMBER 3PM - 5PM.*

*THERE WILL BE A VARIETY OF ACTIVITIES FOR ALL AGE GROUPS,  
ARTS & CRAFTS, CARPET BOWLS, LEGO, GAMES, AND  
A TREASURE HUNT.*

*REFRESHMENTS & NEWSPAPERS WILL BE PROVIDED.*

*CHILDREN MUST BE ACCOMPANIED BY A PARENT OR GUARDIAN.*

**St Mary of Bethany Church,  
Mount Hermon Road  
Woking  
GU22 7UH**



**01483 723424**

**[office@stmaryofbethany.org.uk](mailto:office@stmaryofbethany.org.uk)**



# CARING FOR CARERS AUTISM & MENTAL HEALTH

Whether you're a parent or carer of a neurodivergent individual, or you are yourself autistic, SMEF would like to invite you to come and learn about the impacts of autism on parents and carer's mental health and how to get the support you need.



**Monday**  
**30th September, 2024**



**10:00am - 1:30pm**



**Phoenix Cultural Centre,**  
**Woking, GU21 6JT**

**REGISTER  
NOW**



## Event Highlights

### Interactive Talk

Learn about the impact Autism can have on the mental health of a parent or carer, and how you can implement ways to support good mental health.

### Tea and Traditional Snacks

Come and join us for tea, coffee and some traditional snacks., during our break and meet the professional

### ArtEase Therapy

Therapeutic Workshop - using art and creativity to bring ease to the mind.

[WWW.SMEF.ORG.UK](http://WWW.SMEF.ORG.UK)

CONTACT - [SADIA.SULTAN@SMEF.ORG.UK](mailto:SADIA.SULTAN@SMEF.ORG.UK)



IN PARTNERSHIP  
WITH



**SENIOR MENS | WOMEN | JUNIORS | GIRLS  
MINIS | WALKING | TOUCH | MIXED ABILITY**  
**CHOBHAM RUGBY ARE LOOKING FOR PLAYERS TO JOIN  
US FOR THE 2024/25 SEASON**

- **COMMUNITY RUGBY FOR EVERYONE 3YRS+**
- **FUN & INCLUSIVE**
- **FRIENDLY & SOCIAL**

**JOIN US THIS WEEKEND**

**HEAD ON INTO OUR CLUBHOUSE  
WHERE WE WILL BE WAITING TO  
WELCOME YOU**



*W3W: //ever,gravy,fields*

**SATURDAYS:**  
Walking Rugby: 0900  
Mixed Ability: 1030

**SUNDAYS:**  
MINIS: Preschool to Year 6: 0900  
JUNIORS Year 7 to 13: 1130

**TUESDAYS & THURSDAYS:**  
SENIOR MENS & WOMENS  
TRAINING: 1930  
**WEDNESDAYS: TOUCH 1930**

*For more information on our many options for rugby, head on over to our website: [chobhamrugby.co.uk](http://chobhamrugby.co.uk)*

# Garden



# Explorers

A nature based holiday club



## Half Term Holiday Club

(6 – 11 year olds)

Monday 28<sup>th</sup> October

Friday 1<sup>st</sup> November



- **Explore** and *discover* some of nature's wonders
- **Create** and *grow* using the garden's gifts
- **Play** and take part in *fun* outdoor activities with new friends

**Fun nature based activities for your children to enjoy including:**

- Den-building
- Taking part in a conker tournament
- Making a leaf crown and a pine cone bird feeder
- Bug-hunting
- And much more....

**Details:**

- Takes place in the safe and secure setting of **The Therapy Garden, Normandy, near Guildford**
- Run by a qualified, DBS checked, dedicated team
- [www.thetherapygarden.org](http://www.thetherapygarden.org) for more information
- 9.00am to 3.15pm
- £40 per child, per day



## Book your place now



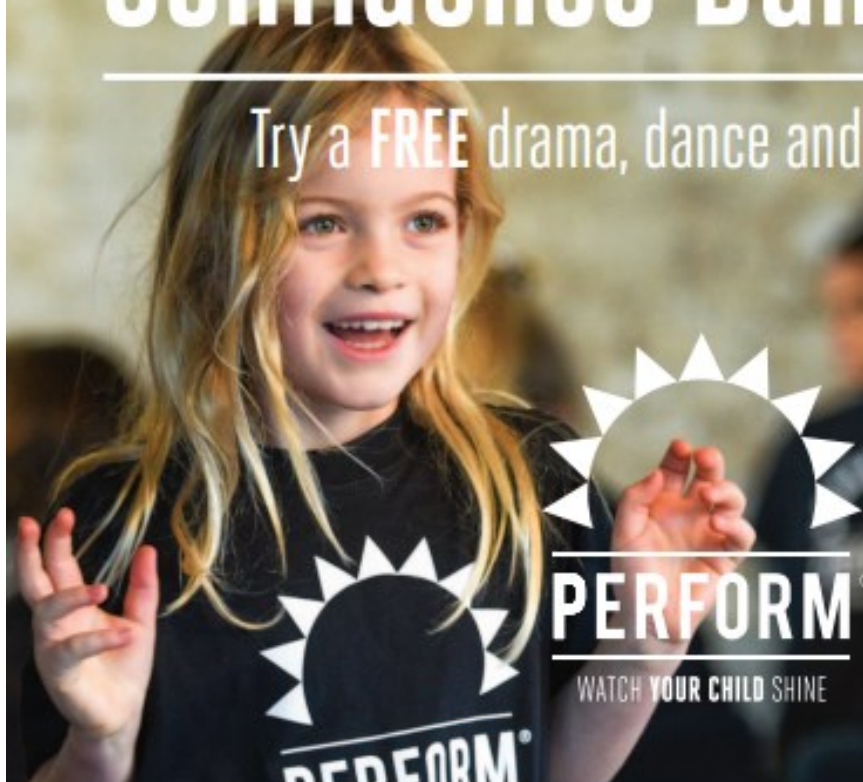
- Scan: QR code
- Online: [www.thetherapygarden.org](http://www.thetherapygarden.org)
- Call: The Therapy Garden: 01483 813846
- Email: [admin@thetherapygarden.org](mailto:admin@thetherapygarden.org)

# Confidence Building Fun

Try a **FREE** drama, dance and singing class

— Hannah has thrived at Perform. It is her favourite thing to do and has given her so much confidence, fun and communication skills.

Hayley Fuller



## Boost your child's social skills

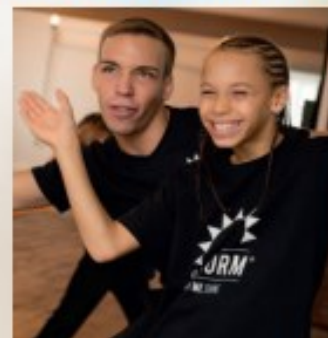
Perform's drama, dance and singing classes use the performing arts to

- ▶ Build confidence
- ▶ Boost concentration
- ▶ Enhance coordination
- ▶ Develop communication skills



### Why try Perform?

- ▶ Unique performing arts-based games and exercises
- ▶ Focus on a different social skill each week
- ▶ Small classes and feedback on your child's progress
- ▶ Specially created scripts, videos and apps to support your child's learning
- ▶ End of term presentation for family and friends



— I think the whole Perform experience is absolutely brilliant. You get so much for your money and feel part of something really special. Lucy Holmes



### Try Perform for FREE

Your child can come and try a class for FREE and there's no obligation to join afterwards. With almost 500 Perform schools, find your nearest and book online at

[perform.org.uk/try](https://perform.org.uk/try)

# ALADDIN

October half-term

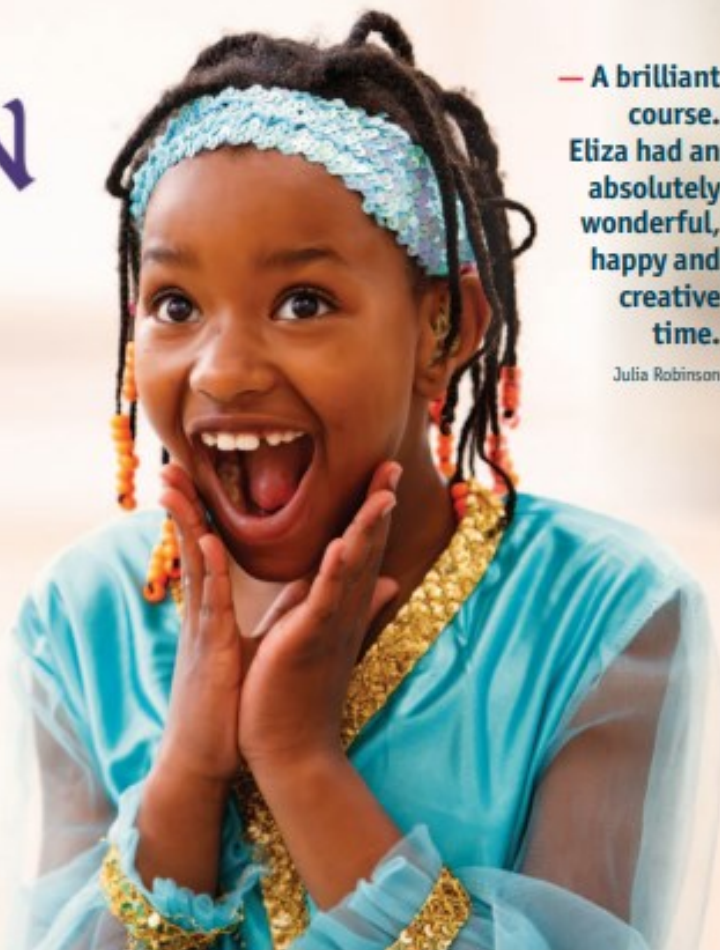
Three day drama, dance and singing courses for 4–10s

[perform.org.uk/aladdin](http://perform.org.uk/aladdin)



— A brilliant course. Eliza had an absolutely wonderful, happy and creative time.

Julia Robinson



## October half-term holiday courses

During half-term, we're climbing aboard Aladdin's magic carpet and whooshing over wind-swept deserts on a spell-binding Arabian adventure.

With enchanted lamps and wise-cracking genies, the children will be transported to a faraway land full of colour, magic and mystery as we bring the ever-popular tale of *Aladdin* to life.

Your child will enjoy:

- ▶ Three fun-packed full days of drama, dance and singing
- ▶ Energetic team of actors, dancers and musicians
- ▶ Engaging arts and crafts activities
- ▶ Colourful performance on the last day for friends and family with original music and costumes
- ▶ Personalised certificate of achievement for every child



— The boys love attending Perform holiday camps, they adore the teachers and all the friends they make.

Sabah Kapur Mathur

## Venues

**Aladdin Three Day Courses**  
See website for timings and prices.

### Monday 28th — Wednesday 30th October

Blackheath	John Ball Primary School, SE3 0TP
Clapham South	St Francis Xavier College, SW12 8EN
Guildford	Christ Church Hall, GU1 2AZ
Hammersmith	Holy Innocents Church, W6 0UB
Herne Hill	Carnegie Community Hub, SE24 0AN
Highbury	St John's Highbury Vale Primary School, N5 1DL
Highgate	Highgate United Reform Church, N6 6BA
Kensington	Kensington United Reform Church, W8 6BL
Pinner	St Luke's Parish Hall, HA5 3EX
Primrose Hill	St Paul's C of E Primary School, NW3 3DS
Victoria Park	Victoria Park Baptist Church, E3 5TG
Wanstead	Wanstead Parish Church, E11 2SW
Wimbledon	Mansel Road Centre, SW19 4AA
Wokingham	Wokingham Methodist Church Hall, RG40 1XS

## How to book

To book or find out more, call 020 7255 9120  
or visit [perform.org.uk/aladdin](http://perform.org.uk/aladdin)

Course T-shirts are required at a cost of £8.50. We offer a 25% discount for siblings attending the same holiday course at the same venue. Payment can be made by credit/debit card or childcare vouchers. See our website for Terms & Conditions and our refund policy. Your child should bring a water bottle and a nut-free packed lunch. For prices, see website for details.



020 7255 9120

[perform.org.uk/aladdin](http://perform.org.uk/aladdin)